

Leif



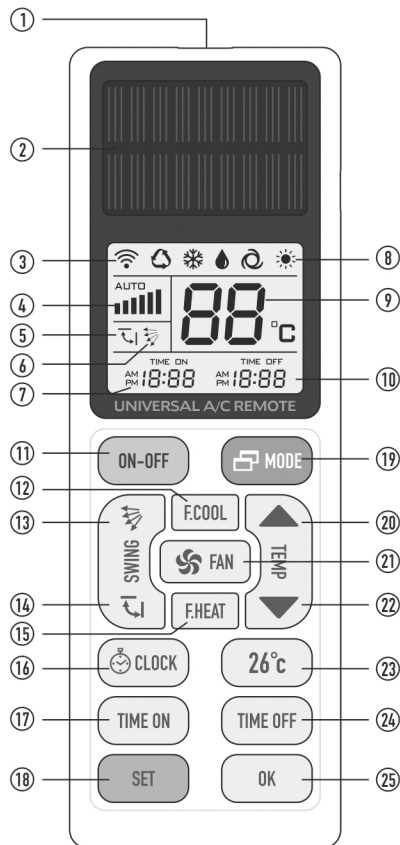
Photoelectric Energy  
Universal A/C Remote Control

## USER INSTRUCTION

## DESCRIPTION

EK-3399E is an air conditioner remote control that converts light energy into electric power. It has a built-in storage capacitor and does not need to use traditional dry batteries. Users only need to put the remote control next to the window or balcony at home to absorb the light. Absorbing the sunlight for 3 to 4 hours can generate sufficient energy to allow the use of remote control for 3 months or more. (Note: It is not recommended to expose the remote control under strong sunlight for a long time.) By converting light to electricity, you can enjoy the wonderful life of green energy!

## COMPONENTS



(The back of the remote control)



- |   |  |
|---|--|
| 1: Infrared Signal Transmitter Port                             | 12: Fast Cool                          |
| 2: Photovoltaic Panel Components                                | 13: Manual Wind Direction              |
| 3: Signal Indicator   | 14: Auto Wind Direction                |
| 4: Fan Speed  | 15: Fast Heat                          |
| 5: Automatic Wind Direction                                     | 16: Clock                              |
| 6: Manual Wind Direction  | 17: Timer On                           |
| 7: Timer ON and Clock Display                                   | 18: Setting                            |
| 8: Mode Option (Auto/Cooling/Dehumidifying/Ventilation/Heating) | 19: Change Mode                        |
| 9: Temperature  | 20: Temperature+                       |
| 10: Timer OFF and Code Display                                  | 21: Fan Speed                          |
| 11: Power ON/OFF  | 22: Temperature-                       |
|   | 23: 26 Degrees Celsius                 |
|   | 24: Timer Off                          |
|   | 25: OK                                 |
|   | 26: Power Switch of the remote control |

## USER MANUAL

### ● The process of converting light energy into electrical energy:

Before use, it is recommended to place the remote control in a sunny and natural light environment such as windowsills, balconies, etc. for 3-4 hours, so that the built-in storage capacitor can obtain enough power. Turn on the power switch on the back of the remote control then set up and use.

#### Warm tips:

- After using 3-5 months, if the digits on the LCD do not appear clearly or the screen flickers, it indicates that the remote control is in low power. Please place it in the light to absorb energy.
- In case the air conditioner has no response to the remote control, please check if there is any barrier in between or the distance is too far.
- Turn on the power switch which is in the back of the remote control before you use it. And it is recommended that turning off the power switch when you are not going to use it for a long time to save the energy.

### ● This remote control is designed with a built-in capacitor for energy storage, there is no need to use or replace the battery.

## SETUP METHODS

This product can be used directly for: GREE (YBOF2), Mitsubishi 388, Midea, Toshiba, Chunlan, Haier, HuaLing and so on. If it's not working, please try to do the setup with one of the methods below:

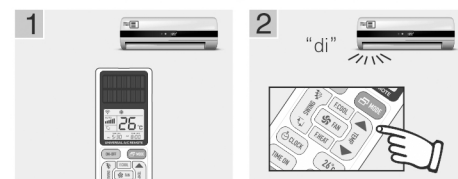
### METHOD A: BRAND BUTTON

Automatically searches only the codes relevant to your A/C brand

- Point the remote at your A/C and hold down the button which corresponds with your brand as per the "Corresponding buttons" below. For example, the TIME OFF button for Fujitsu A/Cs. If your brand is not listed, please refer to Method B & C.
- Immediately as your A/C responds (e.g. makes a beep sound) release the button. This may take up to approximately two minutes. If the remote does not control the AC properly or your A/C does not respond please refer to Method B & C.

#### Button Brand Corresponding Table

ON-OFF	▲ TEMP	▼ TEMP	🌀 FAN
GREE/HAIER	MIDEA/TOSHIBA/CHANGHONG	SHARP/KELON	mitsubishi/OTHERS
MODE	🌀 SWING	🔄 SWING	TIME ON
LG/SAMSUNG/MI/SKYWORTH	HITACHI/PANASONIC	SANYO/HISENSE	CHIGO/DAIKIN
TIME OFF	F.COOL FAST COOLING	F.HEAT FAST HEATING	
FUJITSU/CARRIER	CHUNLAN/AUX	SHINCO/AUCMA	

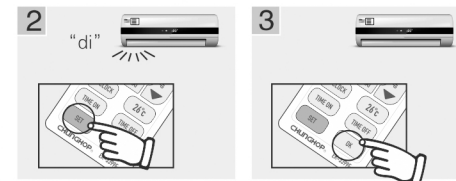


### METHOD B: AUTOMATIC SEARCH

Automatically search every code

- Point the remote at your A/C and hold down the "SET" button for approximately 6 seconds then release. You will then see the remote start to scroll through codes 001 to 999 in the bottom right hand corner of the screen.
- Hover your finger over the "OK" button and immediately as your A/C responds (e.g. makes a beep sound) press the "OK" button twice.

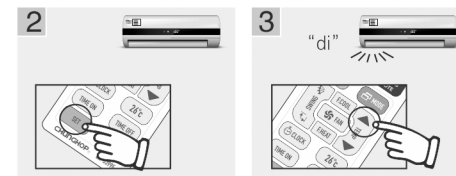
- If the remote does not function as expected repeat steps 1 and 2 again and the remote will search for another code that connects the remote with your A/C. Otherwise try Method C.



### METHOD C: BRAND CODE

Manually search only the codes relevant to your brand one by one

- Lookup your brand in the code list to determine the relevant codes.
- Point the remote at your AC and hold down the "SET" button for 3 seconds until you see a code start flashing in the bottom right hand corner of the screen.
- Use the "TEMP +" or "TEMP-" to adjust the code to the first relevant code and the A/C will respond if it is compatible, if the A/C responds press the "OK" button to select the code.
- If the remote does not control the A/C properly or your AC does not respond please repeat steps 2 and 3 using the next relevant code.



### METHOD D: SEARCHING THE CODE MANUALLY

- Point the remote at your AC and hold down the "SET" button for 3 seconds until you see a code start flashing in the bottom right hand corner of the screen.
- Press "TEMP+" or "TEMP-" button once each time, and pay attention to the A/C at the mean time. The A/C will respond if it is compatible.
- If the A/C responds, press the "OK" button to select the code.
- If the remote does not control the A/C properly or your A/C does not respond, please repeat step 2 and 3.

## ADDITIONAL FUNCTIONS OF THE REMOTE CONTROL

### ● RESTORE FACTORY SETTINGS

Press the "SET" + "🌀 FAN" buttons at the same time for approximately 3 seconds until the entire remote screen flashes to restore factory settings.

### ● FAST COOLING AND HEATING FUNCTION FAST COOLING

Point the remote at the A/C and press the "F.COOL" button. This will change the mode to cooling, temperature to 21 degrees, fan speed to strong and direction to automatic.

### FAST HEATING

Point the remote at the A/C and press the "F.HEAT" button. This will change the mode to heating, temperature to 27 degrees, fan speed to strong and direction to automatic.

### ● CLOCK FUNCTION

- Hold down the "CLOCK" button for approximately 3 seconds until the time on the screen starts flashing.
- Use the "TEMP+" and "TEMP-" buttons to adjust the time, please note if you hold down the button it will scroll faster.
- Press the "CLOCK" button to confirm the adjusted time.

### ● TIMER FUNCTION

Please note that the remote must be programmed with your A/C for this function to work. The remote must also be turned on which you can determine by whether or not a temperature is displayed on the remote screen, if it is not turned on then please press the power button.

Please note using the TIME ON and TIME OFF button may not work for all A/Cs.

- Point the remote at the A/C and Press the "TIME ON" or "TIME OFF" button depending on your desired function, the remote screen will then display "TIME ON01" or "TIME OFF01" and your AC should respond by flashing a light or making a beep sound. "01" indicates the AC is set to turn on/turn off automatically in 1 hour.
- Press the same button again to increase the number of hours. The maximum is 15 hours and if you press the same button once more after it shows "TIME ON15" or "TIME OFF15" on the screen it will turn off this function.

### CONTACT US:

E-Mail: info@chunghop.com  
http://en.chunghop.com